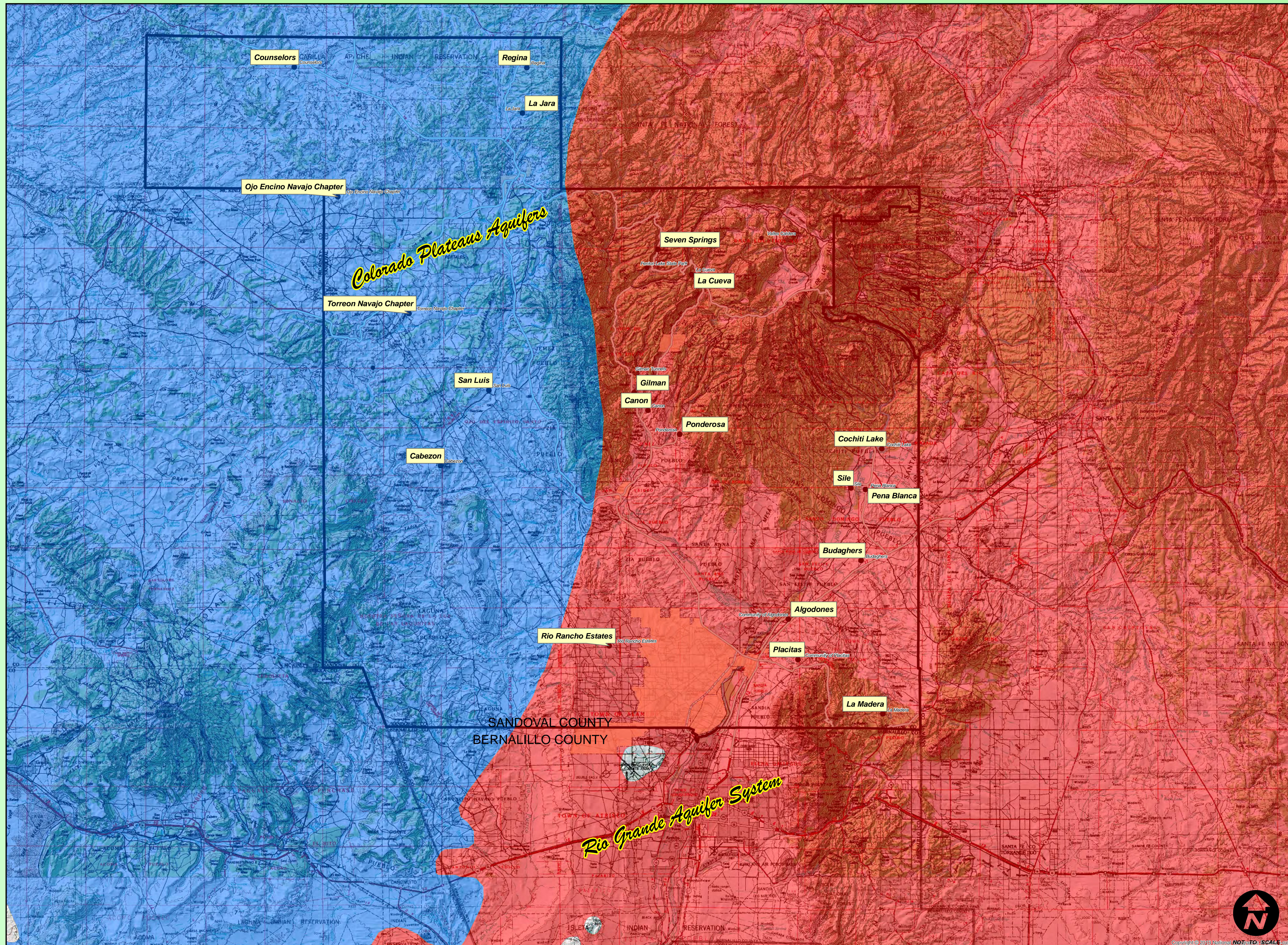




Gas and Oil Land Use / Topography & Aquifer Map Rio Grande Aquifer Representation ~ Sandoval County, NM

July 13, 2018



Location:

Sandoval County, NM

Legend:

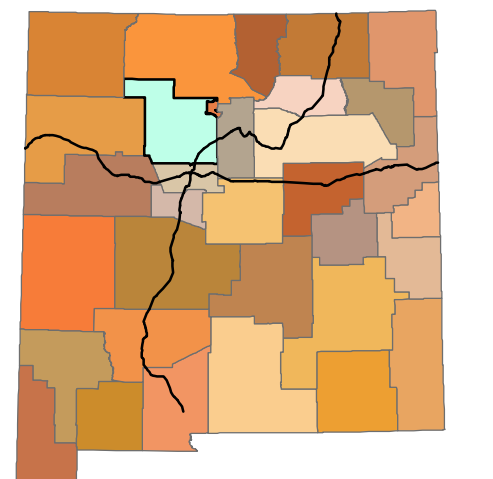
AQ_NAME

- Colorado Plateaus aquifers
- Rio Grande aquifer system

Chief, Cartographic and Publications Program,
Water Resources Division
Organisation Name: U.S. Geological Survey
Role: Point Of Contact
Contact Info:
Voice: 608-238-9333
Delivery Point: 505 Science Drive
City: Madison
Administrative Area: WI
Postal Code: 53711-1061
Country: USA

Abstract: This map layer contains the shallowest principal aquifers of the conterminous United States, Hawaii, Puerto Rico, and the U.S. Virgin Islands, portrayed as polygons. The map layer was developed as part of the effort to produce the maps published at 1:2,500,000 in the printed series "Ground Water Atlas of the United States". The published maps contain base and cultural features not included in these data. This is a replacement for the July 1998 map layer called Principal Aquifers of the 48 Conterminous United States.

Key Map:



The information on this map is for reference purposes only. This is not an official document. All information should be independently verified.

Website: sandovalcountynm.gov
GIS Section
Planning and Zoning Division
1500 Idalia RD Building D
Bernalillo, New Mexico 87004