

Corridor 80-273

Rio Puerco & Farmington Corridor

Introduction

Corridor 80-273 (Figures 1 and 2) begins at the western edge of the Zia Pueblo Reservation in Sandoval County, New Mexico and extends northwest into San Juan County, ending north of La Plata near the New Mexico and Colorado state line. Federally designated portions of this corridor have a 3,500-ft width and are entirely on BLM-administered lands. Corridor 80-273 is designated multi-modal for future electrical transmission and pipeline projects. There are 78.8 miles of designated corridor on BLM-administered lands; the overall route including gaps is 132.6 miles. The designated area is 32,771.8 acres or 51.2 square miles. This corridor is in Sandoval, McKinley, and San Juan counties in New Mexico under the BLM jurisdiction of the Farmington and Rio Puerco Field Offices. This corridor is entirely in Region 2.

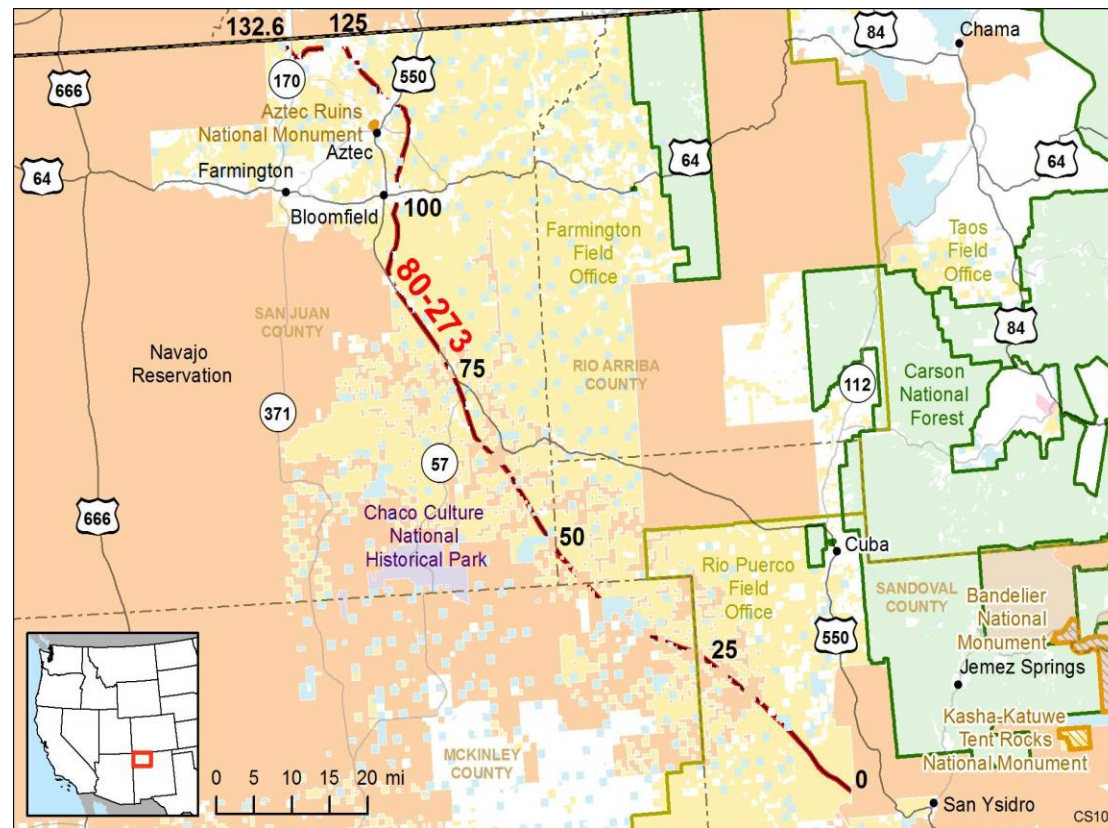
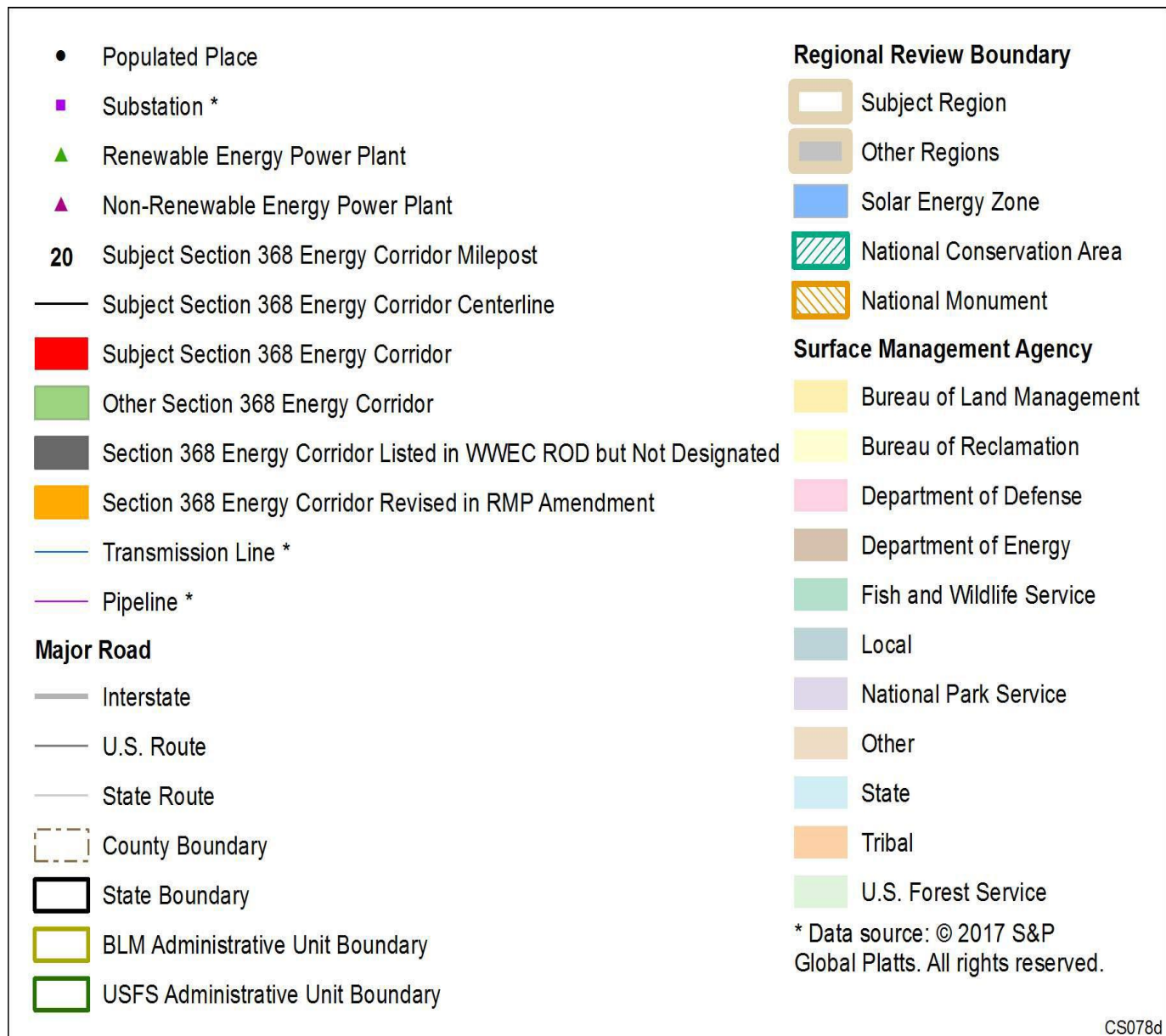


Figure 1. Corridor 80-273

**Key for All Figures**

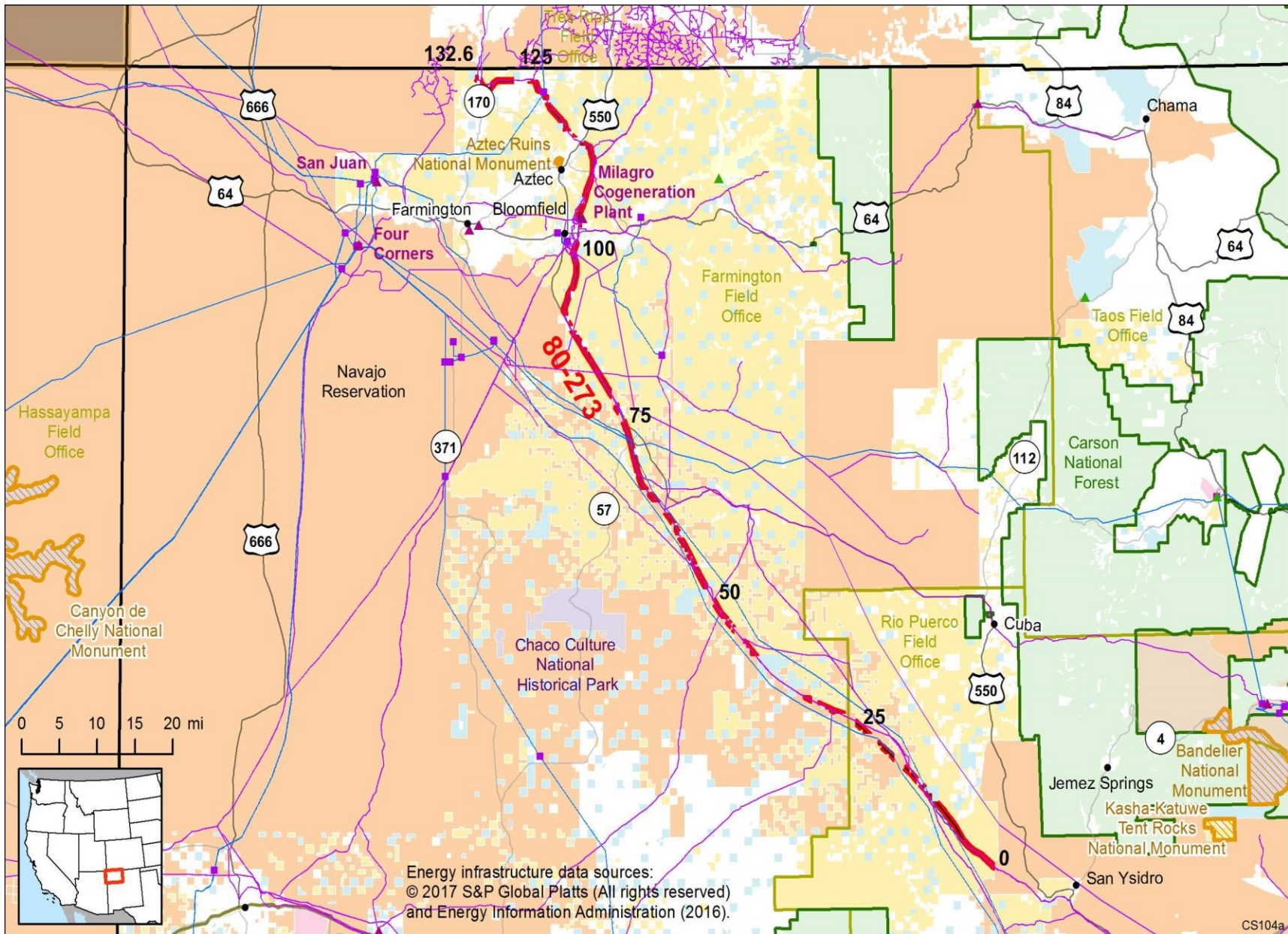


Figure 2. Corridor 80-273, Including Existing Energy Infrastructure

Corridor Rationale

During scoping for the WWEC PEIS, routes generally following this corridor were suggested by the American Wind Energy Association and the Western Utility Group.

Existing Infrastructure: The corridor generally parallels existing pipelines and electric transmission on both sides of the corridor, and the area contains extensive infrastructure development. There is an existing 345-kV line operated by Public Service Company of New Mexico that generally parallels the corridor from MP 0 to MP 73. The distance from the corridor varies from 0 to 2.5 miles. The corridor follows refined product pipelines operated by Kinder Morgan CO2 Company, L.P. and Enterprise Products Partners for almost the entire length of the corridor; an oil pipeline operated by Western Refining from MP 0 to MP 55; and multiple natural gas pipelines operated by Public Service Company of New Mexico, TransColorado Gas Transmission Company, LLC, and Northwest Pipeline Corporation for almost the entire length of the corridor. One 115-kV transmission line follows the centerline of the corridor from MP 102.9 to MP 112.8.

Potential for Future Development: No pending transmission lines or pipelines were identified during interviews for the corridor study. However, in 2013 an additional 16-in pipeline was authorized in the corridor to Mid-America Pipeline Company from MP 66 to MP 102. In addition, the San Juan Generating Station operated by Public Service Company of New Mexico plans to shut down two units of the plant in 2017. The remaining two units may close in 2022 effectively retiring the plant. Four Corners Power operated by Arizona Public Service is considering closing 3 of the 5 units of the plant. The remaining two units would be operated by Southern California Edison. The Farmington Field Office is currently working on a RMP Amendment that would identify more local corridors, as well as avoidance and exclusion zones. These actions would not significantly affect the usefulness of the corridor.

Corridor of Concern Status

This corridor was not identified in the Settlement Agreement as a corridor of concern.

Conflict Map Analysis

Figure 3 reflects a comprehensive resource conflict assessment to help the Agencies identify a corridor's proximity to environmentally sensitive areas. The potential conflict assessment (low, medium, high) shown in the figure is based on [criteria](#) found on the WWEC Information Center at www.corridoreis.anl.gov. The conflict assessment criteria table was used to identify if the corridor meets the Settlement Agreement siting principles to provide maximum utility and minimum impact on the environment. This facilitates balance between resource protection and potential development. Where feasible, corridors should be sited in the areas of low conflict; however, to meet the requirements in the Energy Policy Act and the siting principles in the Settlement Agreement, corridors may be located in high potential conflict areas. Many energy corridors were designated in land use plans prior to being carried forward into Section 368 designation. In almost all instances, these existing corridors (pre-Section 368) contained existing infrastructure. Between MP 0 and MP 75, Corridor 80-273 generally crosses medium potential conflict areas, although low and high potential conflict areas are also present along this portion of the corridor. From MP 75 to MP 132.6, the corridor crosses both low and high potential conflict areas. Opportunities for revising the corridor to reduce conflict while staying on BLM-administered lands are somewhat limited.

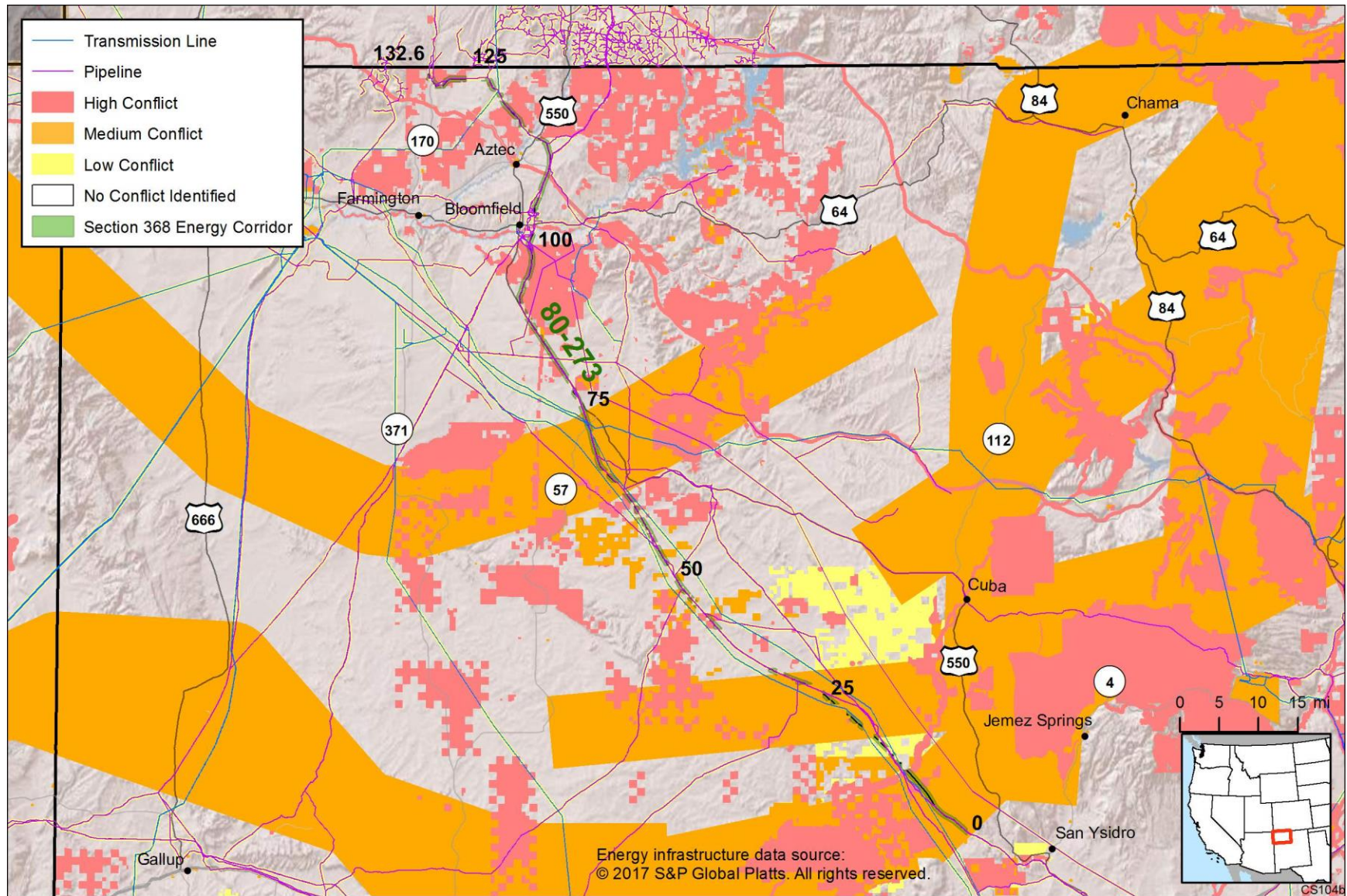


Figure 3. Mapping of Conflict Areas in the Vicinity of Corridor 80-273

Corridor Analysis

The corridor analysis table below identifies the issues potentially affecting Corridor 80-273, locations of resources within the corridor, and the results of the analysis by the Agencies. Issues are checked if they are known to apply to the corridor.

☒ Energy Planning Opportunities

☒ Energy Planning Issues

- ☐ Physical barrier
- ☒ Jurisdiction
- ☒ Existing infrastructure/Available space

☒ Land Management Responsibilities and Environmental Concerns

- ☐ Air quality
- ☒ Cultural resources
- ☐ Ecological resources
- ☒ Hydrological resources
- ☒ Lands and realty
- ☐ Lands with wilderness characteristics
- ☐ Livestock grazing

- ☐ Paleontology
- ☐ Public access and recreation
- ☐ Soils/erosion
- ☒ Specially designated areas
- ☒ Tribal concerns
- ☐ Visual resources

☐ Interagency Operating Procedures

REGION 2 – CORRIDOR 80-273 – ANALYSIS TABLE							
ID	Agency	Agency Jurisdiction	County	Primary Issue	Corridor Location (by Milepost [MP])	Source	Agency Review and Analysis ¹
ENERGY PLANNING OPPORTUNITIES							
80-273 .001	BLM	Farmington FO	San Juan, NM	Substations	MP 86.3 to MP 128.4	GIS Analysis: 29 substations within 5 mi of corridor.	Nearby substations provide an opportunity for the corridor to accommodate additional transmission.
80-273 .002	BLM	Farmington FO	San Juan, NM	Milagro Cogeneration Plant - natural gas	MP 102.9	GIS Analysis: power plant within 0.3 mi of corridor.	The power plant provides an opportunity for the corridor to accommodate additional transmission.
ENERGY PLANNING ISSUES							
Jurisdiction							
80-273 .003	BIA	Tribal lands	Sandoval, McKinley, and San Juan, NM	Tribal lands	MP 15 to MP 93.8	GIS Analysis: Tribal lands within corridor gaps.	BLM can only authorize projects on BLM-administered lands. Development in corridor gaps would require coordination outside of the Agencies. <i>See also tribal concerns.</i>
80-273 .004	NA	State and private	Sandoval, McKinley,	State and private lands intersect corridor gaps	MP 12.5 to MP 93.5, MP 100 to MP 132	GIS Analysis: State and private lands in corridor gaps.	BLM can only authorize projects on BLM-administered lands. Development in corridor gaps would

REGION 2 – CORRIDOR 80-273 – ANALYSIS TABLE							
ID	Agency	Agency Jurisdiction	County	Primary Issue	Corridor Location (by Milepost [MP])	Source	Agency Review and Analysis ¹
			and San Juan, NM				require coordination outside of the Agencies
80-273 .005	NA	State and private	San Juan, NM	Bloomfield, NM	MP 101.1 to MP 102.6	GIS Analysis: town is located in a corridor gap.	BLM can only authorize projects on BLM-administered lands. Development in corridor gaps would require coordination outside of the Agencies.
Existing Infrastructure/Available Space							
80-273 .006	BLM	Farmington FO	San Juan, NM	Existing transmission line	MP 128.2 to MP 128.5	GIS Analysis: transmission line intersects corridor at angles.	Proposed project siting and colocation alternatives to address impacts would be analyzed during the ROW application process. The existing transmission line would not affect the future development of the corridor.
80-273 .007	BLM	Farmington FO	San Juan, NM	Existing Pipelines	MP 81.8 to MP 82.4, MP 51.9 to MP 55	GIS Analysis: several pipelines follow and intersect corridor at angles.	
80-273 .008	BLM	Rio Puerco FO and Farmington FO	Sandoval and San Juan, NM	Existing infrastructure	MP 0 to MP 23.5, MP 70.4 to MP 73.3, MP 89.5 to MP 92.3, MP 97.3 to MP 99, MP 102.6 to MP 102.9, MP 111.4 to MP 115.5, MP 120.6 to MP 121.4	GIS Analysis: several transmission lines and pipelines intersect designated corridor segments and corridor gaps at angles. Agency Input: There are at least 7 linear ROW that exist 0.5 miles west on MP 6 to MP 13.	
80-273 .009	BLM	Farmington FO	San Juan, NM	U.S. Highway 550	MP 74.7 to MP 90.9	GIS Analysis: U.S. Highway 550 runs through center of corridor.	Generally does not affect use of the corridor. Consistent with BLM ROW regulations, notification to adjacent ROW holders would be provided.
80-273 .010	BLM	Farmington FO	San Juan, NM	State Highway 57, US Highway 64, State Highway 575, US Highway 550, and State Highway 170	MP 72.4 to MP 72.8, MP 101.1 to MP 101.3, MP 108.4 to MP 108.7, MP 113.3 to MP 113.5, and MP 131.3 to MP 131.6	GIS Analysis: roads intersect designated corridor segments and corridor gaps.	Generally does not affect use of the corridor. Consistent with BLM ROW regulations, notification to adjacent ROW holders would be provided.

REGION 2 – CORRIDOR 80-273 – ANALYSIS TABLE							
ID	Agency	Agency Jurisdiction	County	Primary Issue	Corridor Location (by Milepost [MP])	Source	Agency Review and Analysis ¹
LAND MANAGEMENT RESPONSIBILITIES AND ENVIRONMENTAL RESOURCE ISSUES							
<i>Cultural Resources</i>							
80-273 .011	NA	Private land	San Juan, NM	Florence and John R. Pond House	MP 132.6 (near)	GIS Analysis: National Register property located on private land as close as 0.5 mi northeast of the end of the corridor near MP 132.6.	Not a consideration for corridor-level planning. Section 106 process would be followed during the ROW application review process to identify any possible impact of development. Impacts on the Pond House from development would primarily be VRM issues.
<i>Ecology: Wildlife</i>							
80-273 .012	BLM	Rio Puerco FO	Sandoval	Raptor nests, wildlife waters and enclosures	Not disclosed.	Agency Input: five historic documented raptor nests located within the current corridor buffer. Five wildlife waters and enclosures within buffer zone.	Not a consideration for corridor-level planning. Issue would be addressed during the ROW application process. Raptor nests and wildlife waters and enclosures are protected by seasonal timing limitations.
<i>Ecology: Special Status Species</i>							
80-273 .013	BLM	Farmington FO	San Juan, NM	Brack's cactus (BLM sensitive species)	MP 52 to MP 80, MP 88 to MP 98.5, MP 103 to MP 113, MP 114.5 to MP 120	Agency Input: Brack's cactus may be present in the corridor.	Management of Brack's cactus includes (1) protection of potential, prime and occupied habitat, (2) avoidance of the plant/habitat, and (3) relocation of the cactus. Development of individual projects within the corridor would be affected by the management guidance currently in effect.
<i>Hydrology: Surface Water</i>							
80-273 .014	BLM	Rio Puerco FO and Farmington FO	Sandoval and San Juan, NM	Four stream crossings: Rio Puerco, San Juan River, Animas River, and La Plata River	MP 7.1 to MP 7.5, MP 100.7 to MP 101.1, MP 114.1, and MP 131.7	GIS Analysis: streams intersect corridor.	Not a consideration for corridor-level planning. Linear ROWs can either span streams or be buried underneath them. The ROW holder/operator is responsible for inquiring, obtaining, and complying with Clean Water Act Sections 401

REGION 2 – CORRIDOR 80-273 – ANALYSIS TABLE							
ID	Agency	Agency Jurisdiction	County	Primary Issue	Corridor Location (by Milepost [MP])	Source	Agency Review and Analysis ¹
							and 404, NPDES, and any other permits required by the applicable regulatory agencies. The ROW holder/operator is responsible for both short and long-term erosion control and stabilization to BLM standards/satisfaction.
80-273 .015	BLM	Rio Puerco FO and Farmington FO	Sandoval, McKinley, and San Juan, NM	Ten intermittent stream crossings: Arroyo Alamo, Rio Puerco, Arroyo Piedra Lumbre, San Isidro Wash, Torreon Wash, Chaco Wash, Canada Alemita, Escavada Wash, Betonnie Tsose Wash, Kimbeto Wash, and Farmington Glade	MP 0 to MP 0.3, MP 3 to MP 7.4, MP 14 to MP 14.5, MP 18.5, MP 27 to MP 32, MP 38, MP 50.8, MP 55.1 to MP 63.2, and MP 121.2 to MP 121.7	GIS Analysis: intermittent streams intersect or occur within the corridor at multiple locations. Agency Input: Anticipate riparian habitat at stream crossings. Proper design and placement of access routes and drainage of roads with proper compaction of disturbed soil is crucial to prevent erosion and resource degradation by surface water.	Not a consideration for corridor-level planning. Linear ROWs can either span intermittent streams or be buried underneath them. The ROW holder/operator is responsible for inquiring, obtaining, and complying with Clean Water Act Sections 401 and 404, NPDES, and any other permits required by the applicable regulatory agencies. The ROW holder/operator is responsible for both short and long-term erosion control and stabilization to BLM standards/satisfaction.
Lands and Realty: Military and Civilian Aviation							
80-273 .016	BLM	Rio Puerco FO and Farmington FO	McKinley and Sandoval, NM	Military Training Route – VR	MP 16.6 to MP 32.2	GIS Analysis: VR and corridor intersect.	Adherence to IOP 1 under Project Planning in the WWEC PEIS RODs regarding coordination with DoD would be required.
80-273 .017	BLM	Rio Puerco FO	Sandoval, NM	Military Training Route – Slow-speed Route	MP 0 to MP 11	GIS Analysis: slow-speed route and corridor intersect.	Adherence to IOP 1 under Project Planning in the WWEC PEIS RODs regarding coordination with DoD would be required.
80-273 .018	BLM	Farmington FO	San Juan, NM	Military Training Route – IR	MP 62.5 to MP 74.5	GIS Analysis: IR and corridor intersect.	Adherence to IOP 1 under Project Planning in the WWEC PEIS RODs regarding coordination with DoD would be required.

REGION 2 – CORRIDOR 80-273 – ANALYSIS TABLE							
ID	Agency	Agency Jurisdiction	County	Primary Issue	Corridor Location (by Milepost [MP])	Source	Agency Review and Analysis ¹
<i>Lands and Realty: Rights-of-Way, Leases, and General Land Use</i>							
80-273 .019	BLM	Rio Puerco FO and Farmington FO	Sandoval, McKinley, and, San Juan, NM	ROW Exclusion	MP 7.8 to MP 8.8, MP 10.4 to MP 11.2, MP 20.5 to MP 20.8, MP 24.6 to MP 25.3, MP 27.9 to MP 28.6, MP 29.1 to MP 29.7, MP 30.6 to MP 30.8, MP 59.4 to MP 62.3, MP 77.3 to MP 77.9, MP 79.6 to MP 82.3, MP 82.8 to MP 83.3, MP 83.5 to MP 85.8, MP 86.2 to MP 87.1, MP 89.2 to MP 89.7, MP 90.6 to MP 92, MP 92.7 to MP 98.9, MP 112.5 to MP 119.6, MP 122.4 to MP 123.1, MP 126.4 to MP 129.8, MP 130.2 to MP 131.3, and MP 132.1 to MP 132.6	GIS Analysis: corridor and ROW exclusion areas intersect	While the corridor crosses into exclusion areas, those areas do not appear to exclude development in the corridor, since active ROWs are already present.
<i>Paleontological Resources</i>							
80-273 .020	BLM	Rio Puerco FO and Farmington FOs	Sandoval, McKinley, and San Juan, NM	Paleontological resources	PFYC: MP 24.7 to MP 25.1, MP 27.5 to MP 29.2, MP 30.5 to MP 33.2, MP 41.5 to MP 50, and MP 52.1 to MP 132.3	Agency Input: Potential exists for significant paleontological resources in the corridor. GIS Analysis: PFYC Class 5 areas intersect corridor	Paleontological resources could be a concern for future development within the corridor. Portions of corridor in PFYC Class 4-5 will require surveys; PFYC Class 3 areas may require surveys depending upon the location. Proposed ground disturbing activities will require assessments, possible mitigation, and/or

REGION 2 – CORRIDOR 80-273 – ANALYSIS TABLE							
ID	Agency	Agency Jurisdiction	County	Primary Issue	Corridor Location (by Milepost [MP])	Source	Agency Review and Analysis ¹
							monitoring, depending on findings as part of the ROW application process.
<i>Specially Designated Areas</i>							
80-273 .021	BLM	Rio Puerco FO	Sandoval, NM	Continental Divide National Scenic Trail (CDNST)	MP 10.6 to MP 11	<p>GIS Analysis: CDNST and corridor intersect.</p> <p>Agency Input: the corridor intersects with the CDT at a location where the surrounding area is a VRM Class IV. Near the intersection of the corridor and the CDT, the CDT runs parallel to Piedre Lumbre road, and intersects with both SR 197 and San Luis Pipeline road.</p>	<p>The CDNST is a Congressionally designated trail. Adherence to IOPs would be required. Through project-specific environmental reviews, impacts would be analyzed in relation to any other alternatives that would be identified.</p> <p>The Agencies have identified the need for a new IOP to address development in Section 368 energy corridors while protecting values in Congressionally designated NSTs.</p> <p>Because of existing infrastructure in the surrounding area, the proposed corridor may not have significant impacts on the CDNST, but analysis is project dependent.</p>
80-273 .022	BLM	Farmington, FO	San Juan, NM	Trail of the Ancients, NM Scenic Byway	MP 58, MP 74.6 to MP 90.9	GIS Analysis: the scenic byway and corridor overlap.	<p>The intersection of the byway and the corridor at MP 58 would not affect development in the corridor. However, over ten miles of the scenic byway appear to be within the corridor and could be an issue for future development. The “Trail of the Ancients” was designated after the 2003 Farmington FO RMP was completed so it is not mentioned in the RMP and a management plan for the byway has not been completed.</p>

REGION 2 – CORRIDOR 80-273 – ANALYSIS TABLE							
ID	Agency	Agency Jurisdiction	County	Primary Issue	Corridor Location (by Milepost [MP])	Source	Agency Review and Analysis ¹
80-273 .023	BLM	Farmington, FO	San Juan, NM	Old Spanish National Historic Trail (OSNHT)	MP 107.7 to MP 107.9	GIS Analysis: OSNHT and corridor intersect.	<p>The OSNHT is not mentioned in the RMP. The OSNHT is a Congressionally designated trail. Adherence to IOPs would be required. Through project-specific environmental reviews, impacts would be analyzed in relation to any other alternatives that would be identified.</p> <p>The Agencies have identified the need for a new IOP to address development in Section 368 energy corridors while protecting values in Congressionally designated NHTs.</p>
80-273 .024	BLM	Rio Puerco FO and Farmington FO	Sandoval and San Juan, NM	San Luis Mesa ACEC, Dzil'Na'Oodlii (Huerfano Mesa ACEC), North Road ACEC, Twin Angels ACEC, Bloomfield ACEC, Valdez ACEC, and Animas #8	MP 7.8 to MP 8.9 (intersect), MP 77.2 to MP 77.9 (intersect), MP 84.1 to MP 85.8 (intersect), MP 91.1 to MP 91.9 (near), MP 100.1 (near), MP 101.9 (near), MP 114.2 to MP 114.6 (intersect)	GIS Analysis: Animas #8, North Road, Dzil'Na'Oodlii (Huerfano Mesa), and San Luis Mesa intersect a small portion of the corridor. Twin Angels ACEC as close as 1.4 mi east of corridor, Bloomfield ACEC as close as 0.3 mi northwest of corridor, and Valdez ACEC as close as 1.3 mi east of corridor.	May be some conflicts with existing Farmington or Rio Puerco RMPs. For example, for the Dzil'Na'Oodlii and North Road ACECs, new ROWs must be placed in existing ROW disturbance, however, this only applies in the small portion within the ACEC. There are 14 ROWs that cross or lie within the corridor where it crosses the ACEC. New ROWs must be in existing ROW disturbance. Boring under the ACEC or spanning the ACEC to avoid disturbance could be considered for new development.
80-273 .025	BLM	Rio Puerco FO	Sandoval, NM	San Luis Raptor Special Management Area	MP 7.7 to MP 8.8	Agency Input: corridor intersects the San Luis Raptor SMA.	Need to evaluate if a corridor-level change can address this issue. <i>See same MP range in Visual.</i>
Tribal Concerns							
80-273 .026	BLM	Rio Puerco FO	Sandoval, NM	Zia Pueblo	MP 0	GIS Analysis: corridor begins adjacent to Zia Pueblo.	The Agencies would consult with the Zia Pueblo as required, for any proposed project in the corridor.

REGION 2 – CORRIDOR 80-273 – ANALYSIS TABLE							
ID	Agency	Agency Jurisdiction	County	Primary Issue	Corridor Location (by Milepost [MP])	Source	Agency Review and Analysis ¹
80-273 .027	BLM	Farmington FO	San Juan, NM	Southern Ute Reservation	MP 131.8	GIS Analysis: corridor ends 0.9 mi south of the Southern Ute Reservation.	The Agencies would consult with the Southern Ute Indian tribe as required, for any proposed project in the corridor.
80-273 .028	BIA	Navajo Nation, State Lands	Sandoval, McKinley, and San Juan, NM	Tribal trust lands and Navajo Nation Allotted Lands	MP 15 to MP 93., with State Lands MP 34.5 to MP 41	GIS Analysis: Tribal lands are in corridor gap.	Development within tribal trust lands and allotted lands would require proponent negotiations with the Navajo Nation Tribal Trust and Navajo Nation Allotted lands and the BIA. Proponents would have to work with the tribe for a tribal resolution consenting to the grant of ROWs (by BIA). BIA cannot grant ROWs without tribal consent.
Visual Resources							
80-273 .029	BLM	Farmington FO	San Juan, NM	VRM Class I	MP 132.1 to MP 132.6 MP 91.1 to MP 92.4	GIS Analysis: VRM Class I areas area adjacent to corridor. Agency Input: corridor adjacent to VRM Class I, Morris ACEC, on east side. GIS Analysis: VRM Class I areas are as close as 1.3 mi east of corridor.	The corridor does not cross VRM Class I areas.
80-273 .030	BLM	Rio Puerco FO and Farmington FO	Sandoval and San Juan, NM	VRM Class II	MP 7.8 to MP 8.8, MP 77.2 to MP 77.9, MP 84.1 to MP 85.8, MP 86.9, and MP 132.0 to MP 132.6 MP 7.8 to MP 8.9	GIS Analysis: VRM Class II areas and corridor intersect. Agency Input: corridor passes through VRM Class II area of San Luis Mesa ACEC and San	Future development within the corridor could be limited as VRM Class II allows for low level of change to the characteristic landscape. Management activities may be seen, but should not attract the attention of the casual observer.

REGION 2 – CORRIDOR 80-273 – ANALYSIS TABLE							
ID	Agency	Agency Jurisdiction	County	Primary Issue	Corridor Location (by Milepost [MP])	Source	Agency Review and Analysis ¹
					<p>MP 77.2 to MP 77.9</p> <p>MP 84.7 to MP 85.5, MP 86.9</p>	<p>Luis Raptor SMA, which are corners of two VRM Class II polygons within the corridor creating a pinch point.</p> <p>Agency Input: a small portion of the corridor passes through VRM Class II area of Dził'Na'Oldlii (Huerfano Mesa) ACEC.</p> <p>Agency Input: corridor is in VRM Class II area of North Road ACEC and lies over US Highway 550.</p>	
80-273 .031	BLM	Rio Puerco FO and Farmington FO	McKinley, Sandoval, and San Juan, NM	VRM Class III	<p>MP 0 to MP 8.5, MP 42.6 to MP 62.6, MP 88.1 to MP 98.5, MP 112.5 to MP 114.4, and MP 126.4 to MP 131.7</p> <p>MP 114.5</p>	<p>GIS Analysis: VRM Class III areas and corridor intersect.</p> <p>Agency Input: small area of VRM Class III (Animas #8 ACEC)</p>	VRM Class III allows for moderate change to the characteristic landscape, although minimizing visual contrast remains a requirement. Management activities may attract the attention of the casual observer, but shall not dominate the view.
80-273 .032	BLM	Rio Puerco FO and Farmington FO	McKinley, Sandoval, and San Juan, NM	VRM Class IV	<p>MP 8.4 to MP 15.1, MP 27.4 to MP 42.6, MP 46.5 to MP 58.8, MP 64.4 to 93.7, and MP 98.5 to MP 131.2</p>	GIS Analysis: VRM Class IV areas and corridor intersect.	Corridor meets Settlement Agreement general principles for corridor siting for minimum impact on the environment in terms of visual resources. VRM Class IV objectives allow for major modification to occur and management activities may dominate the view, although minimizing visual contrast remains a requirement.

¹ Projects proposed in the corridor would be reviewed during the ROW application review process and would adhere to federal laws, regulations, and policy.

Abstract Acronyms and Abbreviations

ACEC = Area of Critical Environmental Concern; BIA = Bureau of Indian Affairs; BLM = Bureau of Land Management; CDNST = Continental Divide National Scenic Trail; DoD = Department of Defense; FO = Field Office; GIS = geographic information system; IOP = interagency operating procedure; IR = Instrument Route; MP = milepost; MS = manual section; NA = not applicable; NPDES = National Pollutant Discharge Elimination System; OSNHT = Old Spanish National Historic Trail; PEIS = Programmatic Environmental Impact Statement; PFYC = Potential Fossil Yield Classification; RMP = Resource Management Plan; ROD = Record of Decision; ROW = right-of-way; VR = visual route; VRM = Visual Resource Management; WWEC = West-wide Energy Corridor.